



TEAMWORK



CURIOSITY



RESPECT



PRIDE



KINDNESS

### Dear Parents, Carers & Families,

Next week sees the beginning of **Autism Acceptance Month** - as a school we will be recognising this in school and will spend time creating a collaborative piece of artwork which will include everyone in our school community to be proudly displayed in our atrium after the break. You can find out more information about this special month by looking at the National Autistic Society website - you can use the QR code.



It is unbelievable that next week is our final week of the term - we have lots planned and look forward to seeing parents/carers come along to our Family Learning Showcases to take part in learning with your children. Please join us by coming to the front office.

Reception - 2nd April, 9.15-9.50am

Y1 - 2nd April, 2.30-3.15pm



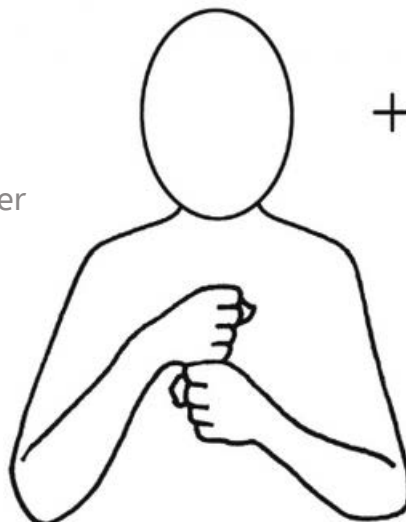
Finally, a thank you to all of parents/carers that attended Parent's Evening this week and to those that have completed our Parent survey.

## SIGN OF THE WEEK

Miss Ingrams and the Lime Wood Primary team.



Grandmother



# WE LOVE LEARNING RECEPTION - MAKING BREAD



The children have loved reading 'The Little Red Hen' this week!



TEAMWORK

RESPECT

KINDNESS

PRIDE

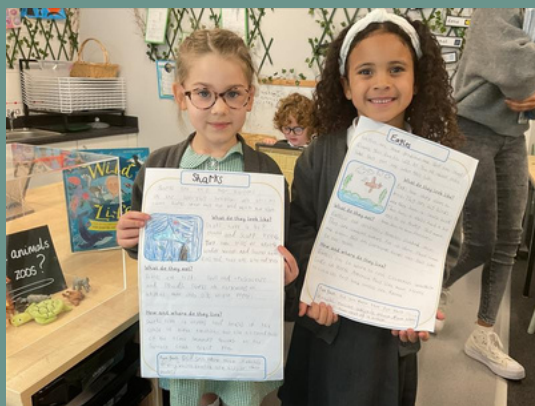
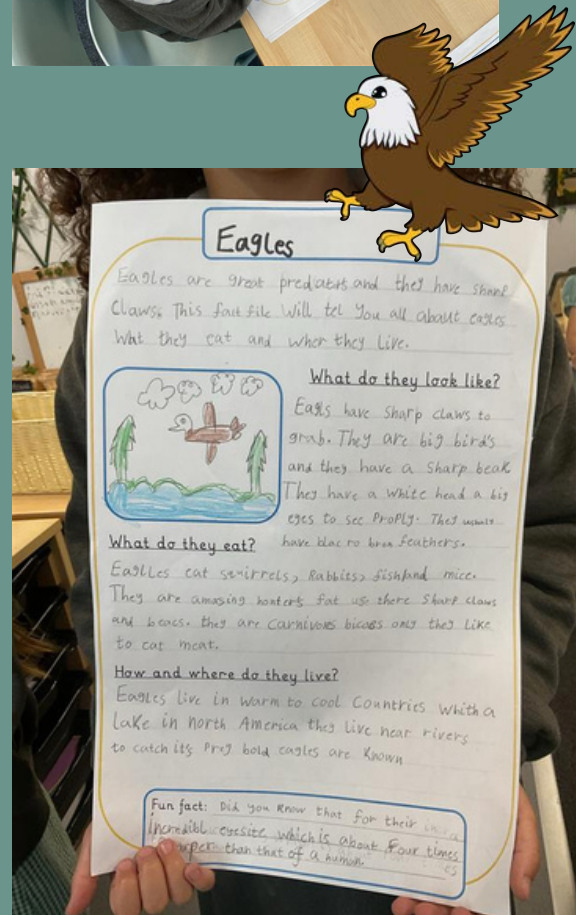
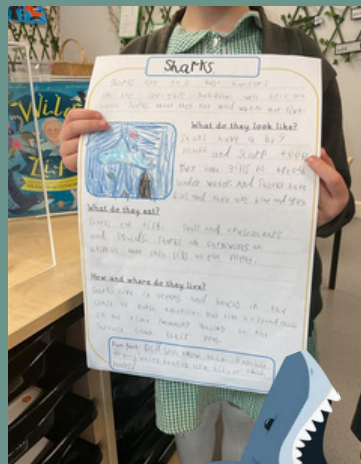
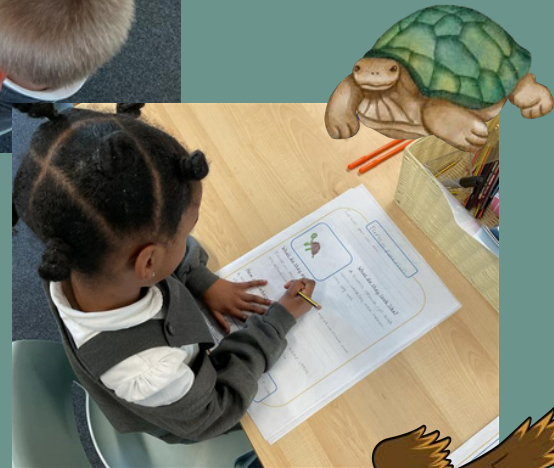
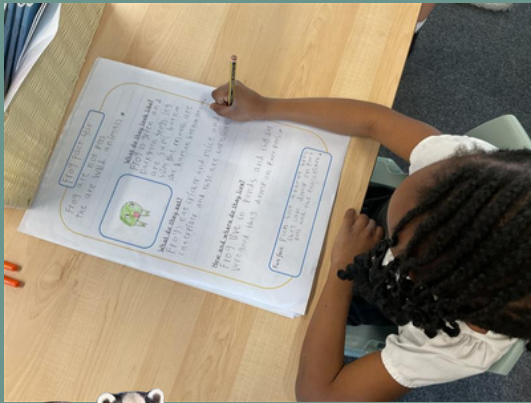
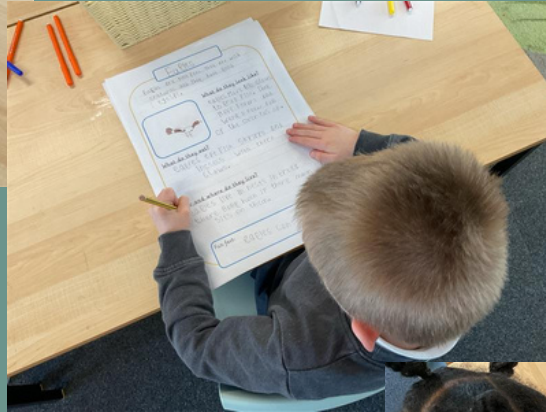
CURIOSITY

# WE LOVE LEARNING

## Y1 - WRITING



Y1 writing has been going from strength to strength and this week the children have been completing their final pieces; their **published outcomes!** A story about going to the Zoo and one of the characters was Miss Ingrams!



**Fantastic**

TEAMWORK

RESPECT

KINDNESS

PRIDE

CURIOSITY

# Y1 OPPORTUNITY PUPIL CHAMPIONS



## Do you want to be a Play Leader?

We are looking for friendly and helpful children who would like to help other children when they are playing at lunchtime.

This will be our first Pupil Champion role in the school.

Next week, any children interested in being a Play Leader will be asked to complete an application form.

Successful applicants will be announced next week and will start their role in the Summer term.



### Playground Leaders Pack



#### Welcome Message

Congratulations on becoming a Playground Leader!

Your role is important in helping others have fun and stay safe during playtimes. This pack will guide you on how to be a great leader.

#### How to Organise Games

S.T.E.P



**Space** How much space does a game need?

**Task** What games are we going to have?

**Equipment** What equipment will we need?

**People** How many people will be able to play?

#### Playground Leader Role

To be a good playground leader, you must:

- be helpful and kind
- be organised
- stay patient
- use polite and respectful language
- include everyone
- stay positive and cheerful
- be fair
- be friendly



You will get a uniform to wear so everyone knows your role!



### Lime Wood Primary School

*"To deliver a curriculum that is provided by good teachers underpinned by an effective blueprint for excellence in culture, behaviour, attainment and wellbeing - to find the champion in everyone"*



#### Play Leader Application Form

Hello! 🌟 We're looking for friendly, kind and helpful children to be Play Leaders at school. If you follow our school rules, enjoy helping others and love making playtime fun, we'd love to hear from you!

Please answer the questions below as best as you can.

1. What is your name?
2. How old are you?
3. Why would you like to be a Play Leader?
4. What do you think a Play Leader does at playtime?
5. What school rules do you think are important during playtime?
6. Can you give an example of when you helped a friend or solved a problem at playtime?
7. What games or activities would you like to help other children play?
8. What makes you a good choice to be a Play Leader?

Thank you for filling in the form! We're excited to read your answers!



Lime Wood Primary School, 2 Sarsby Road, Eith, DA8 1FJ  
01522 344230 | LWPo-File@webz.health.org.uk  
[www.lime-wood-trust.com](http://www.lime-wood-trust.com)

Proud to be part of Woodland Academy Trust  
[www.woodlandacademytrust.co.uk](http://www.woodlandacademytrust.co.uk)

Ignite the spark, reveal the champion.



TEAMWORK

RESPECT

KINDNESS

PRIDE

CURIOSITY

# VALUES IN ACTION



All of the teachers have been proud to share children's achievements during parents evening this week

# LUNCHTIME AWARD



Xavier, Poppy  
Mila, Kairo-Israel

# STAR OF THE WEEK

Charlie, Joshua N, Kairo-Israel, Mia, Pearl, Kingsley, Ethan Ja, Tae

# GOLDEN TREE

Feliz, Kayden, Flynn, Frank, Milani, Talia, Anthony, Preston

# ATTENDANCE

W/c 24.3.25

We strive for 96%+ attendance for all our children

Hundred Acre Wood  
95%  
Neverwood Forest  
96%

Faraway Tree  
93%  
Baobab Tree  
93%

Whole school, Year to date: 95%



Please speak to us if we can help with any attendance matters. We are here to help.

# KEY DATES



1st April - Autism Acceptance Month begins

2nd April -

- Reception Family Learning Showcase, 9.15am (around 40 mins)
- Year 1 Family Learning Showcase, 2.30pm, until 3.15pm
- PTFA Easter Disco!

4th April - Last day of term

# SAFEGUARDING

The NSPCC website contains lots of support and advice for parents/carers.



**Support for parents**  
Whatever family life brings, we're here to help



TEAMWORK

RESPECT

KINDNESS

PRIDE

CURIOSITY

# COMMUNITY

Reverend Harris-Faulkner joined us for part of our Celebration Assembly and spoke to Y1 about the Easter Story.



## Congratulations!



A huge well done to our Year 1 Teacher, Miss Willard, for earning all the badges needed to achieve Apple Teacher status! She is excited to put her new skills into practice and further enhance the learning experience for our children as they use their devices. Fantastic work, Miss Willard—we're so proud of you!



Don't forget to book your free activities this Easter Holidays:

[https://drive.google.com/file/d/1SE2vgyfGTZLaTqRrLoVWsnLn4eRS8qpU/view?usp=drive\\_link](https://drive.google.com/file/d/1SE2vgyfGTZLaTqRrLoVWsnLn4eRS8qpU/view?usp=drive_link)

Join us for coffee and to learn about our free courses during summer term.

**COFFEE AFTERNOON**  
MONDAY  
**31ST MARCH**  
AT LIMWOOD SCHOOL  
1PM

**BEXLEY MOORINGS PROJECT**

Free to parents and carers in Bexley

Topics include: Play, feelings, listening, discipline strategies and managing stress and anger.

Courses delivered for parents, by parents.

for more information email: [karen@bexleymoorings.co.uk](mailto:karen@bexleymoorings.co.uk)



Don't forget!

We can support you in your recycling - drop your used batteries in to the front office!



Learning & Enterprise College Bexley

## Paediatric First Aid

3 Weeks Paediatric First Aid Course for Parents and Carers

The course will cover:

- Unconscious casualty
- Breathing and non-breathing
- Choking
- Shock
- Minor Burns
- Epilepsy / Seizures
- Bleeding - minor/major/nose/bleed/splinters

**Course Details:**  
Paediatric First Aid  
Course code - F101-CO001-001 / 24-04  
Starting Wednesday, 7 May 2025  
Duration - 3 Weeks (Dates 07/05/2025, 14/05/2025 and 21/05/2025)  
Times - 1-00pm - 3:00pm  
Venue - Lime Wood Primary School

To book your place on the course, please call the Learning and Enterprise College Bexley on 020 3045 5176 and quote the course title and location, or collect and complete an enrolment form from the school office.

Please bring proof of ID with you to the first session. This is needed so that we can run this course for free.  
You must attend all three sessions to receive your accreditation.

TEAMWORK      RESPECT      KINDNESS      PRIDE      CURIOSITY

WE NEED  
your  
SUPPORT!

PTFA



If you would like to host a stall at one of these events, contact the PTFA directly! [ptfalwp@gmail.com](mailto:ptfalwp@gmail.com)

# Volunteers needed

The PTFA need more volunteers to help them with future events and supporting the work of the school so that events are able to go ahead.

Can you spare some time and help your community?

Let the PTFA know by emailing them: [ptfalwp@gmail.com](mailto:ptfalwp@gmail.com)

## Save the date



Lime Wood Primary School

Don't miss out...Keep up to date with all our latest news!



@LimeWoodWAT



lime\_wood\_primary



Lime Wood Primary School



## Follow us



TEAMWORK

CURIOSITY

RESPECT

PRIDE

KINDNESS